

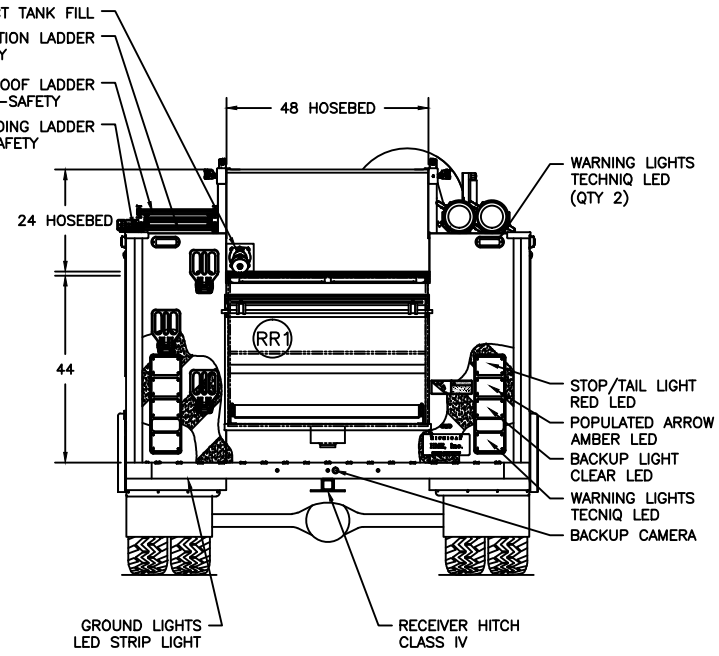
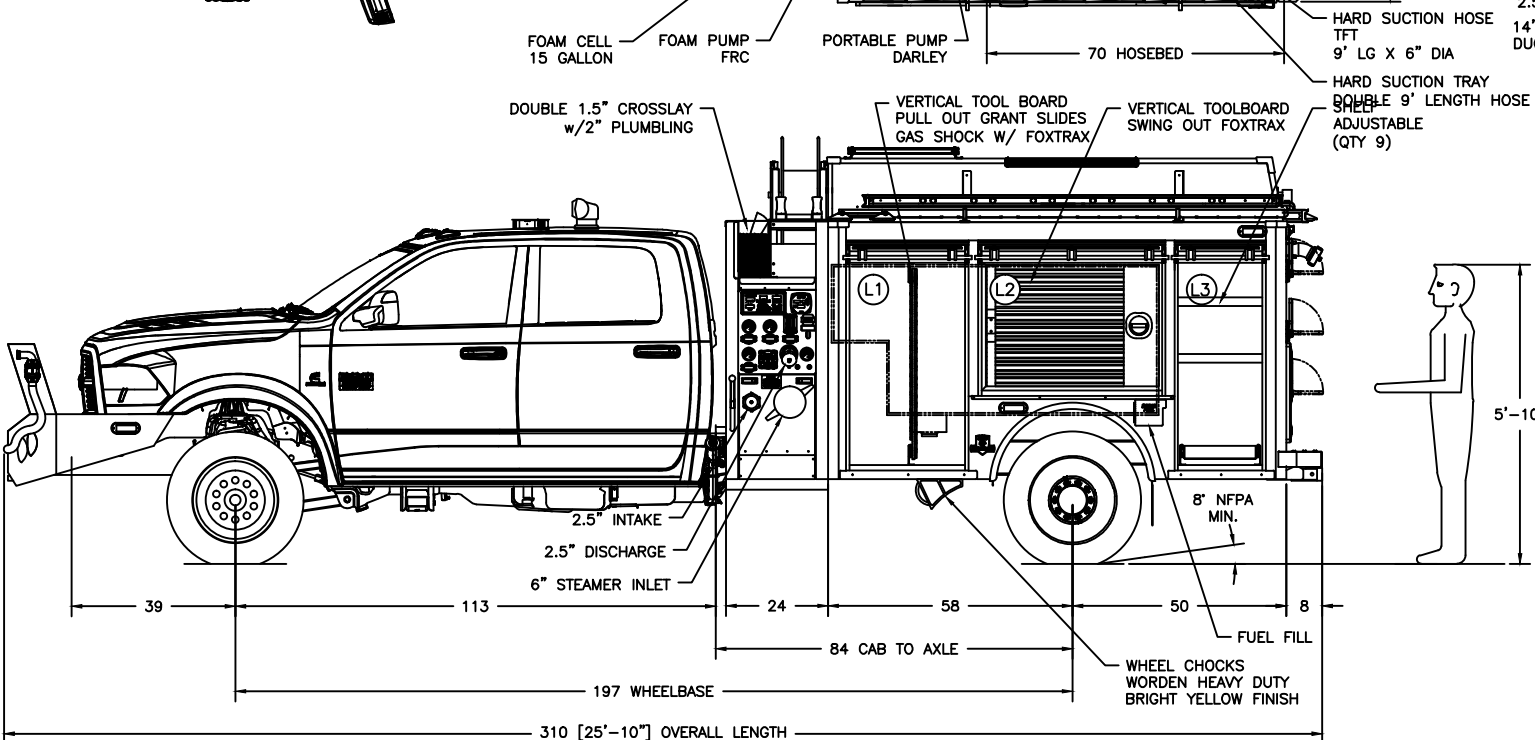
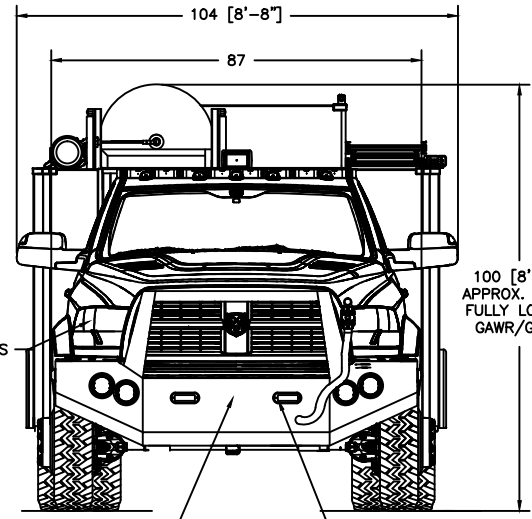
THIS DRAWING IS AN OVERALL REPRESENTATION OF THE APPARATUS AS PROPOSED.

THE EXACT DIMENSIONS, LOCATIONS OF ACCESSORIES AND/OR COMPONENTS MAY BE REVISED PENDING COMPLETE ENGINEERING OF THE CUSTOM REQUIREMENTS OF THE INDIVIDUAL APPARATUS ORDER.

IF THERE IS A DISCREPANCY BETWEEN THE BODYBUILDER PRINT AND THE WRITTEN PROPOSAL, THE SPECIFICATIONS WITHIN THE PROPOSAL PREVAIL.


APPROVED BY: \_\_\_\_\_ TITLE: \_\_\_\_\_  
FIRE DEPARTMENT

APPROVED BY: \_\_\_\_\_ TITLE: \_\_\_\_\_  
HME, Incorporated



COMPARTMENTATION						
COMPT.	BEHIND DOOR			CLEAR OPENING		
	WIDTH	HEIGHT	DEPTH	WIDTH	HEIGHT	COMPT. VOLUME
L1:	35 1/2"	57"	22"	26 1/2"	49"	25.0 FT³
L2:	44"	40"	22"	42"	34"	22.0 FT³
L3:	23 1/2"	57"	22"	19"	49"	17.0 FT³
R1:	35 1/2"	57"	22"	26 1/2"	49"	25.0 FT³
R2:	44"	40"	22"	42"	34"	22.0 FT³
R3:	23 1/2"	57"	22"	19"	49"	17.0 FT³
RR1:	48"	33 1/2"	27"	45 1/2"	24"	25.1 FT³

D	JC	27 AUG '21	DEMO UNIT SOLD
C	JB	05 JAN '21	CHANGE ORDER
B	JB	08 DEC '20	CHANGE ORDER
A	JB	26 AUG '20	ORIGINAL RELEASE
LET	BY	DATE	REVISION



1950 BYRON CENTER AVE.  
WYOMING, MI. 49519

THIS PRINT IS PROVIDED ON A RESTRICTED BASIS AND IS NOT TO BE USED IN ANY WAY DETRIMENTAL TO THE INTERESTS OF HME, INC.

NAME  
**TAOS SKI VALLEY, NM**

DRAWN J. BELANGER	DATE 26 AUG '20	APPROVED N/A	DRAWING FILE 23626 - TAOS SKI VALLEY, NM.DWG
THIRD ANGLE PROJECTION	SIZE B	NUMBER 23626	SCALE NTS
			SHEET 1 OF 1